

Datasheet

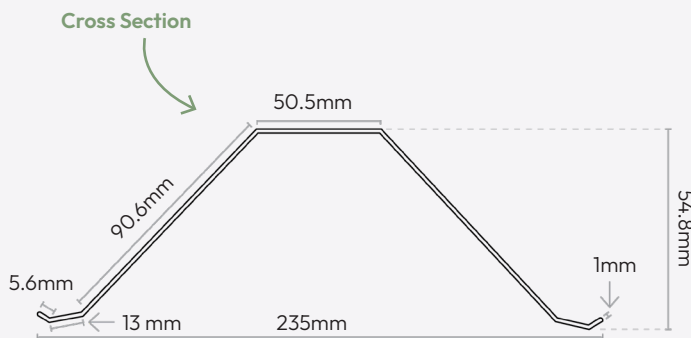
The Hip Support Tray is a UV stable application designed to provide support while helping to maintaining a straight line to hip fittings, when used in conjunction with the 6m Dry Ridge and Hip Kit.

Guidelines

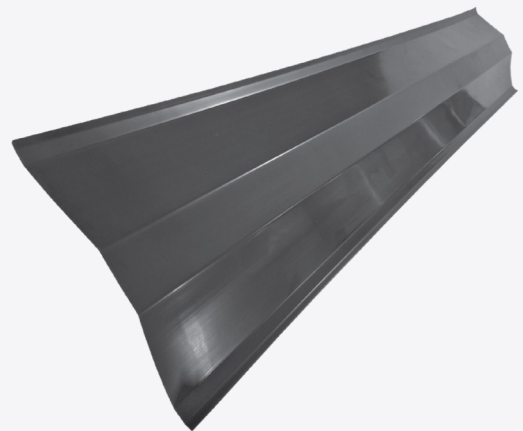
Fit whilst laying the 6m Dry Ridge and Hip Kit DL2DR&H. The Hip Support Tray is to be fitted over the Ridge and Hip Roll once it has been dressed into the tile profile / hip line. When in place, it provides support to hip fittings during and after installation.

Specifications	
Product Code	DL2DHT
Product	1.2m Dry Hip Tray
Weight	504g
Pcs / Carton	20
Cartons / Pallet	50
Material	PVC
Manufacturing Process	Extrusion
Colour	Black

ISSUE DATE: DECEMBER 2025



\*showing + or - 0.2mm



Construction Technical Services

0808 169 4444

Don & Low Ltd, Glamis Road, Forfar, Angus, DD8 1FR, Scotland, UK  
Tel: +44(0)1307 452200 Fax: +44 (0)1307 452201

Don & Low assumes no liability for written errors within this document.



All products are covered by 15 year Durability Warranty. Terms and conditions apply.



All plastic products are made in the UK.