

Don & Low Roofing Accessories

TX Slate Tile Vent

Datasheet

This versatile vent range is compatible with both natural and fibre cement slate and is suitable for standard slate sizes of 600 x 300 mm and 500 x 250 mm. It can also accommodate smaller slate formats, giving installers greater flexibility on site.

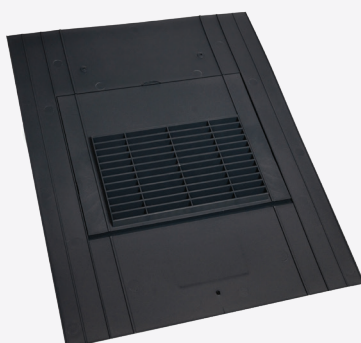
Two airflow options are available: a discreet “in-line” or “capped” model delivering 10,000 mm², and a larger version offering 20,000 mm² airflow, with the added benefit of supporting DN150 duct connections.

Ventilation Guidance – Slate Vents			
Vent Type	Airflow Capacity	Spacing for 10,000 mm ² /m	Spacing for 5,000 mm ² /m
In-Line or Capped Vent	10,000 mm ²	1 metre	2 metres
Large Vent (DN150)	20,000 mm ²	2 metres	4 metres

All models suitable for use with natural and fibre cement slates (600 x 300 mm, 500 x 250 mm, and smaller sizes). Minimum pitch: 17.5°.

Specifications					
	TX Slate Vent	TX 10K Slate Vent	TX 10K Slate Vent Adaptor	TX 20K Slate Vent	Flexipipe
Product Code	DL3ULSV	DL3SV	DL3SVA	DL3SV20K	DL3FP
Free Airflow	10,000 mm ²	10,000 mm ²	-	20,000 mm ²	
Unit of measure	10 PC/Carton	10 PC/Carton	20 PC/Carton	2 PC/Carton	10 PC/Carton
Weight	618 g	890 g	53g	1054g	225g
Material	Polypropylene (PP)				
Manufacturing process	Injection moulding				
Colours	Grey, Black	Grey, Black	Grey	Grey, Black	Black

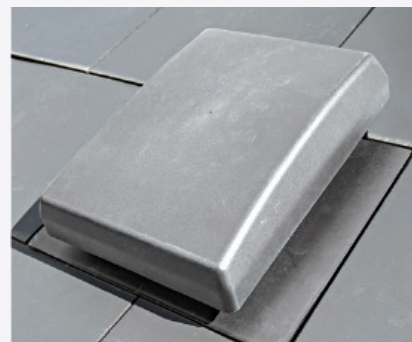
ISSUE DATE: DECEMBER 2025



TX Slate Vent



TX 10K Slate Vent



TX 20K Slate Vent

Construction Technical Services

0808 169 4444

Don & Low Ltd, Glamis Road, Forfar, Angus, DD8 1FR, Scotland, UK
Tel: +44(0)1307 452200 Fax: +44 (0)1307 452201

Don & Low assumes no liability for written errors within this document.



All products are covered by 15 year Durability Warranty. Terms and conditions apply.



All plastic products are made in the UK.