

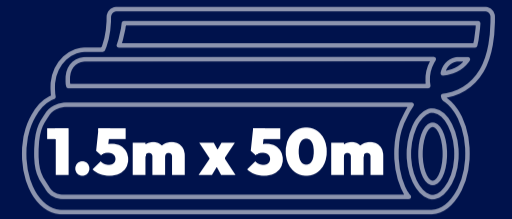


Don & Low
MEMBER OF THRACE GROUP

Proshield®

Vapour permeable, air barrier, self-adhesive membrane with a recyclable release liner for walls and floors.

USER GUIDE



- Easy to install
- Class B-s1,d0 Fire Resistance (when fixed to a suitable substrate)
- Airtight
- High tensile strength
- W1 Water Resistance
- Full Range of Tapes are available for detailing
- Stabilised against UV degradation
- Excellent breathability in walls minimises condensation risk
- Allows protection of timber and light gauge steel frames, SIPS and CLT Panels from wind driven rain, snow and dust during construction, together with the controlled release of vapour from the structure
- Fabric weight: 270g/m²

ROLL SPECIFICATIONS

(other sizes available on request)
Detail Strip: 500mm x 50m

COLOUR: Bright blue (top)
WEIGHT: 270 g/m²

Quality Control checks are carried out on the incoming materials, during production and on the finished product.

Quality Control checks on the finished product include:

- Weight
- Tensile strength & elongation
- Tear
- Water resistance

TECHNICAL ADVICE

Don & Low has a dedicated technical department which can deal with installation details, view drawings for approval and give specialist advice on the correct use of Don & Low products.

Call 0808 169 4444
membranes@donlow.co.uk

Common issues and remedials:

Bubbles and creasing

We recognise creases are often unavoidable and are accepted in detailing. Ensure any creases are pushed as flat as possible using suitable tools such as a roller. In all cases do not puncture or cut the crease.

Exposed substrate / structure

Where a penetration such as a steel proves difficult to detail and there is an area of exposed substrate around this detail, cuts of Proshield® can be applied to better the detail, ensuring 75mm lap is made to the main roll previously applied to the substrate. Follow penetration details above and finish with liquid flashing as required.

Tears and punctures

Tears and punctures should be treated with a patch of Proshield® a minimum of 150mm x 150mm and with at least 75mm overlap to any damage. Patches are not supplied and can simply be cut from a main roll or offcut.

Reverse lap / Underlap.

In an area which has had the overlap applied in reverse the area should have a minimum 150mm wide strip of Proshield® applied over. Apply centrally ensuring a minimum 75mm lap above and below the original overlap.

Delamination

Use Proshield® strips as a tape and follow the above reverse lap rule, ensuring 75mm cover. Should the original material delaminate and lose a significant portion of its adhesion, replace this section entirely.

On Site damage and contamination

Contamination is common on sites, should Proshield® become dirty or contaminated e.g. Mortar / cement making contact with the materials, ensure the product is cleaned immediately. If not replace section of material ensuring 75mm overlaps.

Compromised adhesive

Due to having an adhesive backing if left exposed for time dust and debris can compromise the adhesion. Ensure the adhesive back is not left exposed for time and if so follow Delamination sections above. Use Proshield® strips as tape where required or alternatively replace the area.

TEST	Proshield®	
Product Code		FNC 270
Mass Per Unit Area with release liner (g/m ²)		270
Mass Per Unit Area without release liner (g/m ²)		220
Thickness with Release Liner (mm)		0.68
Thickness without Release Liner(mm)		0.66
Water Penetration Resistance (W1)		Pass
Resistance to penetration of Air		< 0.01 m ³ /m ² .h.50Pa
Water Vapour Transmission Properties Sd (m)		0.098
Tensile Strength (N/5cm)	Before ageing	MD 400/CD 260
	After ageing	MD 340/CD 220
Elongation (%)	Before ageing	MD 50/CD 70
	After ageing	MD 40/CD 60
Tear Resistance (N)		MD 190/CD 190
Dimensional Stability (%)		MD +0.02/CD +0.40
Flexibility at low temperature	No cracking at -40°C	
Reaction to Fire Test Results*	Class B, s1, d0	On Class A Board
	Class F	Free Hanging

* Any substrate with a density equal to or greater than 1350 kg/m³; a minimum thickness of 6 mm and a fire performance of A2-s1, d0 or better (excluding paper faced gypsum plasterboard).



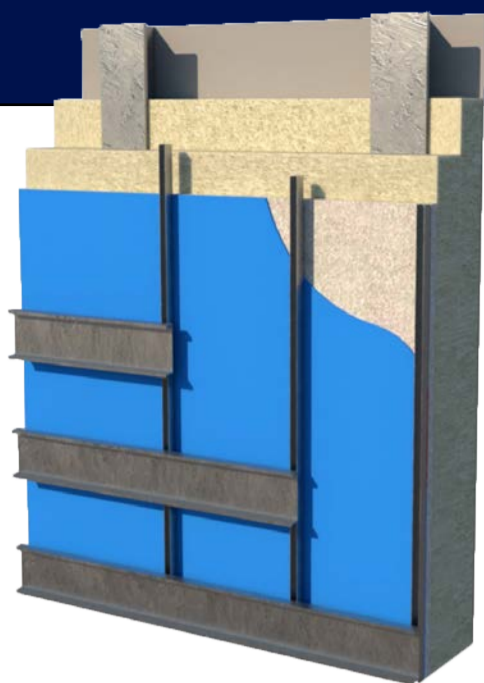
Don & Low
MEMBER OF THRACE GROUP

Don & Low Ltd
Newfordpark House Glamis Road Forfar
Angus DD8 1FR Scotland UK
† +44 (0)1307 452200 f +44 (0)1307 452300
e membranes@donlow.co.uk
www.donlow.co.uk

Code: 998
Issue 03
November 2025



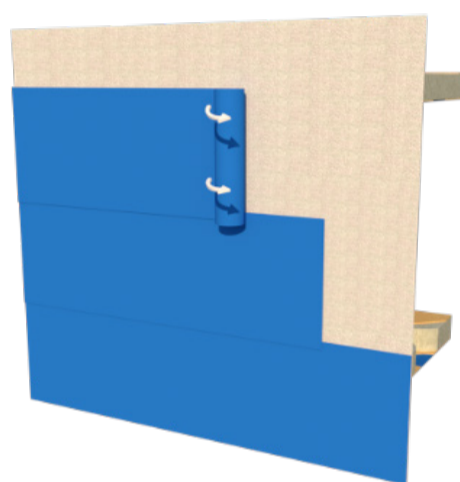
Proshield® Installation Instructions



Walls (Horizontal Fixing Method)

9. Use chalk line or similar for guidance
10. Pre-cut material to required length
11. Roll out length with release liner outermost
12. Starting at corner, peel back release paper by apx 150mm (see image)
13. Fold release liner back and using a stiff brush or roller smooth out the adhesive and adhere to the substrate, working from the centre out to release any air bubbles or creases.
14. Once the row is complete, start next row above, ensuring minimum 75mm vertical overlap
15. Ensure each layer which has a vertical joint, is staggered as per image (section 6).

1. The product must be installed in accordance with these instructions and the recommendations given in NHBC Standards 2024, Chapters 6.1, 6.2, 6.9 and 6.10, where appropriate.
2. This product can be damaged by careless handling, high winds or vandalism and must not be left any longer than is necessary (and as a maximum 3 months).
3. Installation can be conducted under all normal conditions where it is deemed construction can be carried out. The minimum air and surface temperature at which installation can take place is -5°C.
4. The substrate must be clean, dry and free from contaminants, sharp protrusions or other matter that may hinder the adhesion of the membrane. Any loose dust or dirt must be removed by wiping with a dry cloth or brushing.

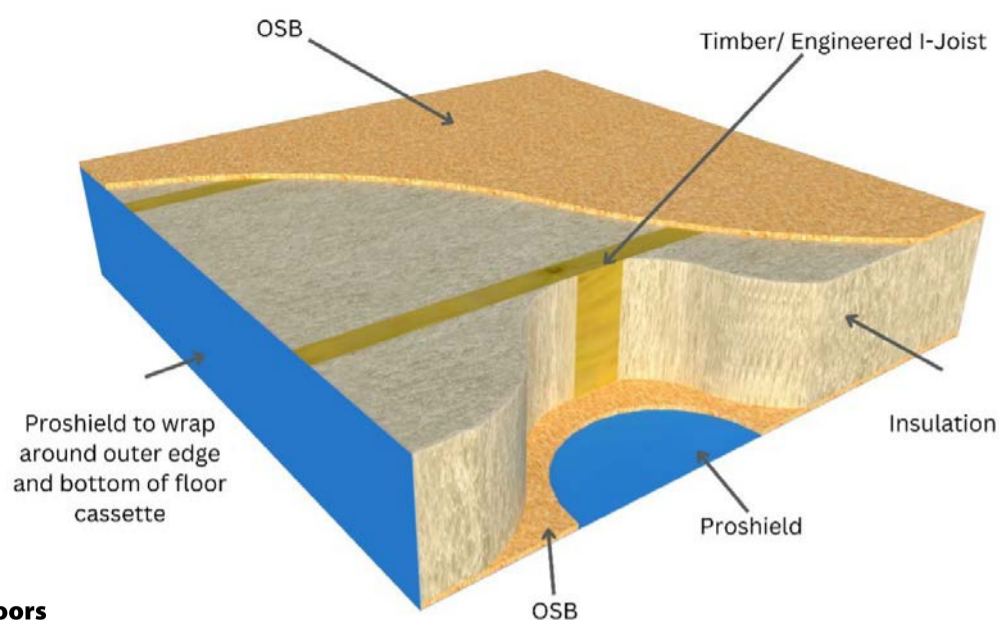
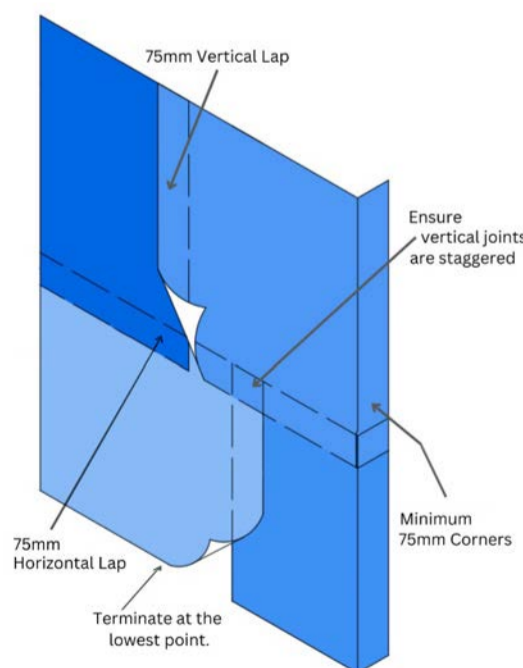


Walls (Vertical Fixing Method)

16. As details 9 - 13 previously
17. Ensure vertical columns of Proshield® are properly aligned to ease installation and ensure overlap.
18. Once the column is complete, start next column to the side, ensuring minimum 75mm vertical overlap.
19. Where possible, stagger vertical laps in material

Walls

5. The product must be fixed with the blue side facing outermost, in such a way as to shed water away from the sheathing and below the lowest timber. Upper layers should be lapped over lower layers.
6. Vertical and horizontal laps must be at least 75mm. Vertical laps must be staggered where possible (see diagram below).
7. Stud positions should be clearly marked to allow for wall tie fixing.
8. The lowest timbers in the wall should be covered and protected by the membrane.

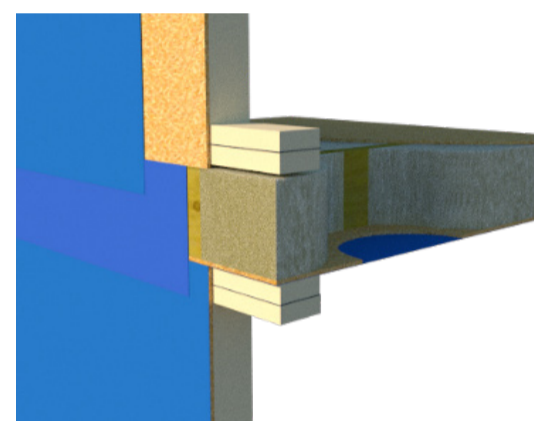


Floors

20. The product should be installed continuously to the underside of the floor cassette and brought up the floor edges with a minimum 75mm overlap.
21. Proshield® should then be used to seal any junctions between the wall and floor (see diagram below)

Wall / Floor Interaction

22. Wall beneath floor to be covered with Proshield® up to the top of the wall
23. Exposed face of floor cassette to be covered with 300mm Proshield® Cover Strip (ensure it overlaps Proshield® on lower wall by minimum 75mm)
24. Upper wall to be landed on floor cassette.
25. Proshield® to be fitted to upper wall with a minimum 75mm overlap with the Proshield® which is on the floor cassette.



Structural Openings (Windows / Bays / Doors).

26. Fit pre-cut Proshield® corner (using Template provided) to each corner of opening
27. Cut and Fit Edge strips to opening perimeter.
28. Dress Proshield® material, fitted over external face of wall, into opening, making a 45° cut and folding into aperture.

Other openings (Pipework, Wall Penetrations)

29. **Option 1** - Fill joints and gaps around penetrations with proprietary filler / liquid flashing and ensure seal is made. Ensure the continued rule of 75mm cover is followed. 75mm liquid flashing over the penetrating object and 75mm over the substrate.
30. **Option 2 (for straight edge penetrations such as box steel, steel beams)** - Cut a 150mm section of Proshield® and dress Proshield® up to opening, ensuring it covers the sealed area with 75mm onto substrate and 75mm onto the penetrating object.

